

Feedback Form

Regional Electricity Planning in the GTA East Region – April 20, 2026

Feedback Provided by:

Name: Raisa Chowdhury

Title: Planner A, Policy

Organization: City of Oshawa

Email: [REDACTED]

Date: 05/06/2026

To promote transparency, feedback submitted will be posted on the GTA East [engagement webpage](#) unless otherwise requested by the sender.

Following the GTA East regional planning webinar held on April 20, 2026, the Independent Electricity System Operator (IESO) is seeking feedback on the identified electricity needs and initial screening of potential options. A copy of the presentation as well as recording of the session can be accessed from the [engagement web page](#).

Please submit feedback to engagement@ieso.ca by May 11, 2026.

Topic	Feedback
What feedback do you have on the wire and non-wire options that will be	Click or tap here to enter text.

Topic	Feedback
considered to meet the region's electricity needs?	
What additional information should be considered in the evaluation of wire and non-wire options?	Click or tap here to enter text.
Are there other types of information that would be helpful for us to provide in future engagements to enhance understanding of community perspectives and insights?	Click or tap here to enter text.

General Comments/Feedback

The City of Oshawa has launched Imagine Oshawa: the Oshawa Official Plan Review, a city-wide initiative that will guide how Oshawa grows and evolves over the long term.

A key part of the Official Plan Review is a **Growth Management Study**, which explores when, where and how future growth and development should happen in Oshawa. As part of the Growth Management Study, the following documents have been prepared:

- [Land Needs Assessment](#)
- [Employment Lands Strategy](#)
- [Intensification Strategy](#)
- [Growth Phasing and Urban Expansion Options Report](#)
- [Engagement Summary Report](#)

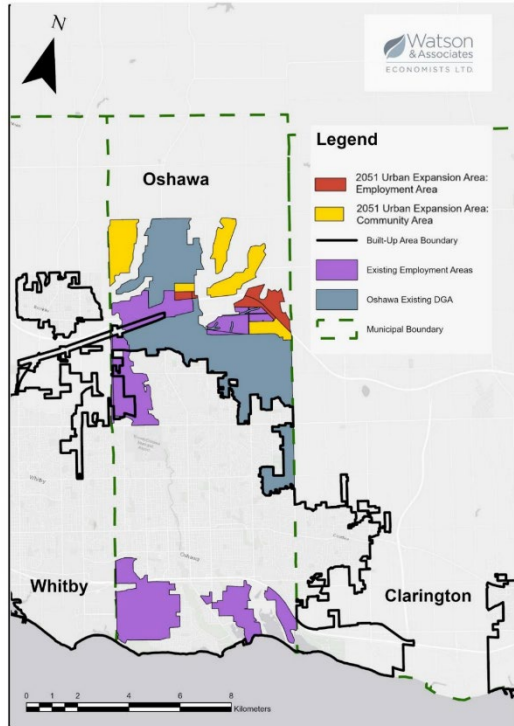
The Lands Needs Assessment evaluates Oshawa's capacity to accommodate forecast population, housing, and employment growth, and recommends policies to ensure sustainable, efficient, and complete community development.

The Lands Needs Assessment identifies several findings and recommendations, including:

- In line with Envision Durham, the City of Oshawa is forecast to have a 2051 population of 298,500. The Growth Management Study extends this forecast to 2056, with an overall population target of 314,400. This 2056 forecast represents an average population growth rate of 1.2% annually.
- From 2021 to 2056, new housing is forecast to include a mix of 21% low density development, 31% medium density development and 48% high density development. It should be noted that low density development consists primarily of single and semidetached dwellings, medium

density development includes townhouses and apartments in duplexes, and high density development consists primarily of apartments.

- From 2025 to 2056, it is anticipated that there will be approximately 22,000 new housing units in Oshawa's built-up area.
- A phasing plan was developed to align growth with servicing capacity, capital planning, and a coherent urban structure. The phasing approach is structured around two time periods for bringing lands forward: 2025 to mid-2041 (Phase 1) and mid-2041 to mid-2056 (Phase 2).



Source: Watson & Associates Economists Ltd., based on City of Oshawa G.I.S. data.

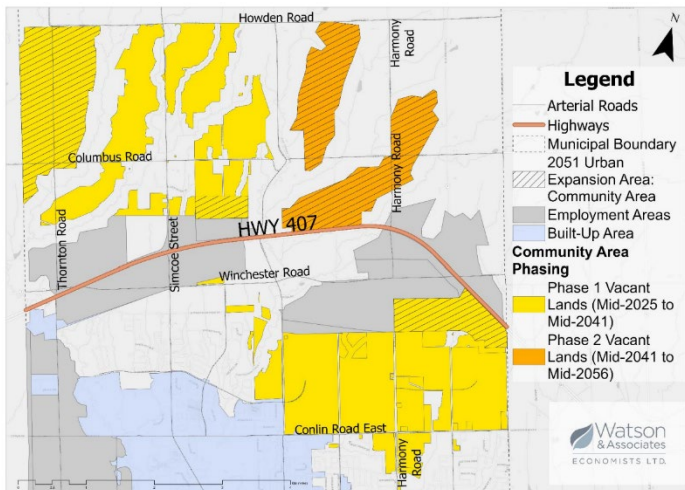
bringing lands forward: 2025 to mid-2041 (Phase 1) and mid-2041 to mid-2056 (Phase 2).

- For Community Areas, the Phase 1 and 2 structure identifies which designated growth area lands are expected to be substantially developed or committed before or after mid-2041 and which are anticipated to come forward later.

- Employment Area phasing follows a related but distinct logic. Given that Employment Areas are anticipated to be largely built out by 2056, the focus is less on maintaining a long-term reserve and more on:

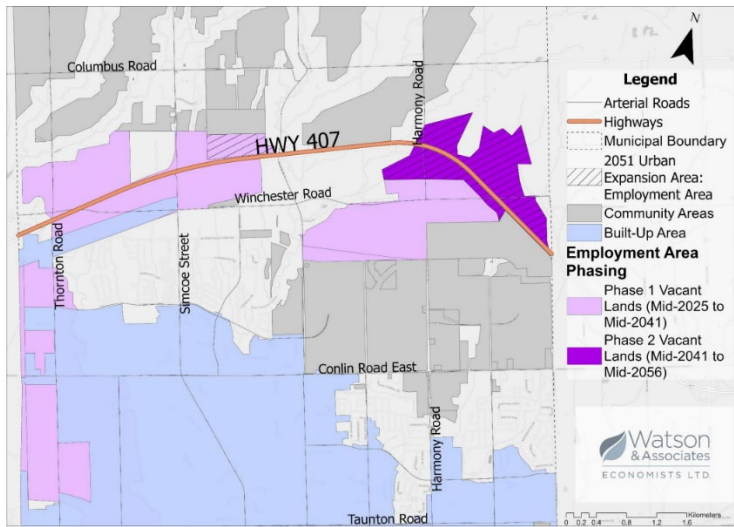
- Ensuring a continuous supply of market-ready employment land throughout the planning period;
- Prioritizing areas in the early phases that can leverage existing or near-term regional servicing and the goods movement network; and,
- Allowing later-phase Employment Areas to come online as infrastructure and market conditions warrant, with the expectation that most designated Employment Area land will be committed or substantially developed by the end of the horizon.

Phase 2 encompasses the remaining Community Area designated growth area lands as well as later-phase Employment Area lands.



Source: Watson & Associates Economists Ltd.

The above map displays Community Area lands identified for Phases 1 and 2 of development.



Source: Watson & Associates Economists Ltd.

The above map displays Employment Area lands identified for Phases 1 and 2 of development.

The phasing plan is intended to provide high-level structure and direction rather than to function as a rigid, engineering-based gating mechanism. While servicing and transportation considerations have informed the evaluation, the infrastructure analysis is strategic in nature and confirms that no systemic constraints preclude the sequencing identified. Ongoing monitoring of housing delivery, employment absorption, and infrastructure planning initiatives will remain important to ensure that phasing continues to reflect market conditions, capital planning cycles, and policy direction over time.

For more information, please visit <https://connectoshawa.ca/OPReview> or contact Laura Moebis, Principal Planner at the City of Oshawa at OPReview@oshawa.ca.