
Connectivity Testing: IESO Reports Site User Interface (UI)

January 19, 2024



Table of Contents

Preface	2
TC01 - Access IESO External Reports (Public) UI	3
TC02 - Access IESO External Reports (Private) UI	5
Additional Resources	9

Preface

This document outlines the test cases to be executed as part of the connectivity testing phase for the applications impacted by the Market Renewal Program (MRP). In this phase of testing, the primary objective is to assess and validate the connectivity components of the systems. Comprehensive functional testing phases will be scheduled for a future date and is not in scope of this test.

Please ensure any anomalies, disruptions, or irregularities discovered while performing the connectivity testing are documented in the qTest or Issue Log Template. This will contribute significantly to the overall improvement of the IESO tools.

Precondition:

- 1. Access to** <https://reports-sandbox.ieso.ca/private>

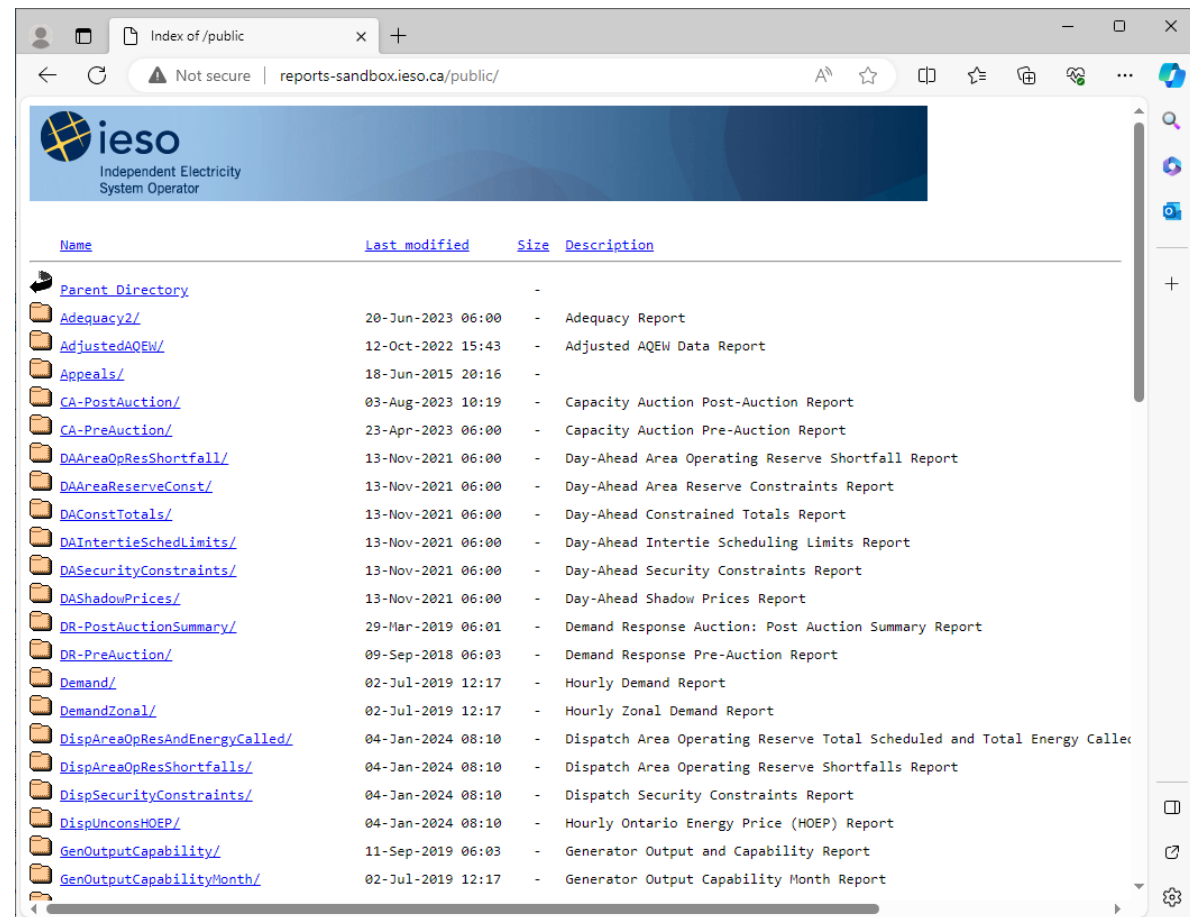
TC01 - Access IESO External Reports (Public) UI

Step User Instruction

Expected Result

- 1 Navigate to the **IESO Reports (Public)** URL using the Microsoft Edge browser: <http://reports-sandbox.ieso.ca/public>.

No login credentials are required. The Public Reports page should load.



Step User Instruction

Expected Result

2 Verify the headers on the **IESO Reports (Public)** webpage are as follows:

1. Name
2. Last modified
3. Size
4. Description

The headers on the **IESO Reports (Public)** webpage should look like this:



Name	Last modified	Size	Description
Parent Directory			

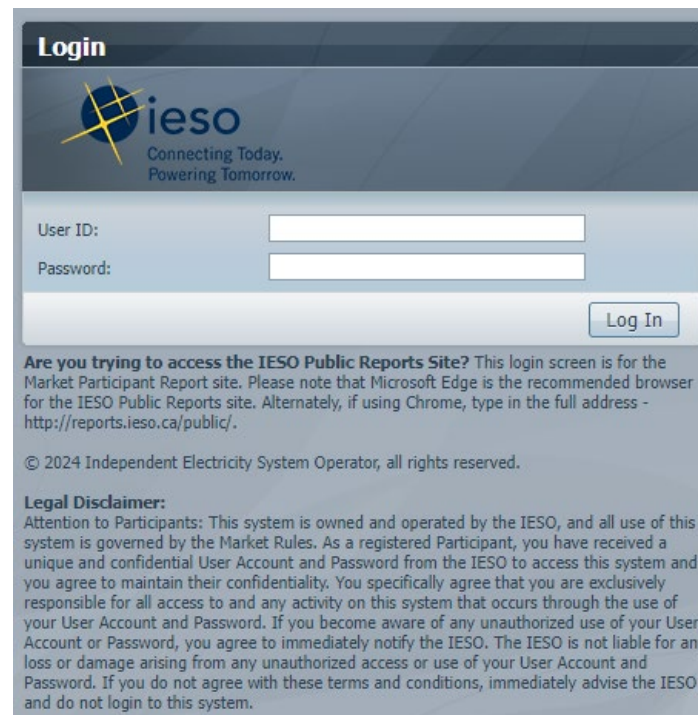
TC02 - Access IESO External Reports (Private) UI

Step User Instruction


Expected Result

- 1 Navigate to the **IESO Reports (Private)** URL using the Microsoft Edge browser: <https://reports-sandbox.ieso.ca/private>.

An authentication page should load where the user can enter their login credentials.



Login

 **ieso**
Connecting Today.
Powering Tomorrow.

User ID:

Password:

Are you trying to access the IESO Public Reports Site? This login screen is for the Market Participant Report site. Please note that Microsoft Edge is the recommended browser for the IESO Public Reports site. Alternately, if using Chrome, type in the full address - <http://reports.ieso.ca/public/>.

© 2024 Independent Electricity System Operator, all rights reserved.

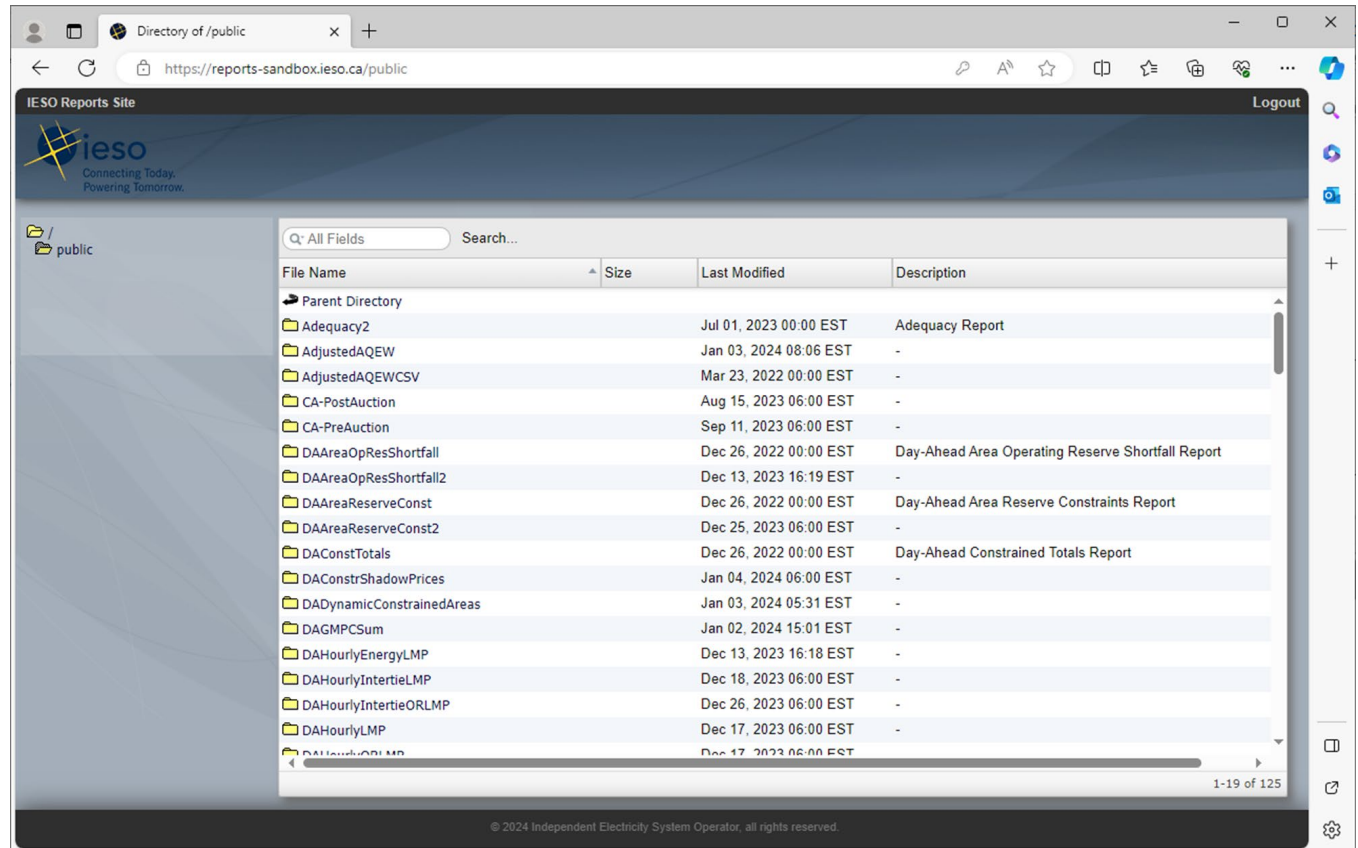
Legal Disclaimer:
Attention to Participants: This system is owned and operated by the IESO, and all use of this system is governed by the Market Rules. As a registered Participant, you have received a unique and confidential User Account and Password from the IESO to access this system and you agree to maintain their confidentiality. You specifically agree that you are exclusively responsible for all access to and any activity on this system that occurs through the use of your User Account and Password. If you become aware of any unauthorized use of your User Account or Password, you agree to immediately notify the IESO. The IESO is not liable for any loss or damage arising from any unauthorized access or use of your User Account and Password. If you do not agree with these terms and conditions, immediately advise the IESO and do not login to this system.

Step User Instruction

- Following a successful login, ensure the webpage is directed to the **IESO Reports (Private)** webpage.

Expected Result

Following the login, the **IESO Reports (Private)** user interface should load.



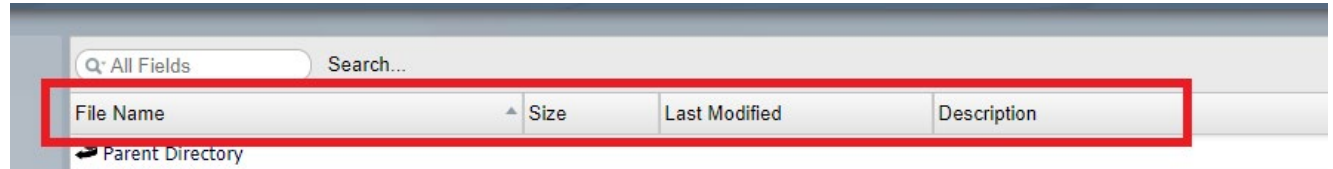
Step User Instruction

Expected Result

3 Verify the headers on the **IESO Reports (Private)** webpage are as follows:

1. File Name
2. Size
3. Last Modified
4. Description

The headers on the **IESO Reports (Private)** webpage should look like this:

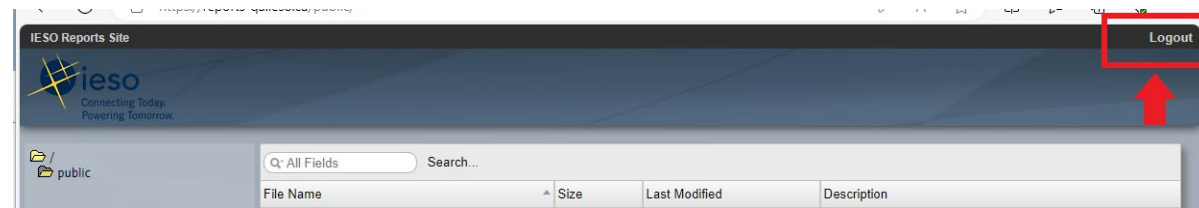


Step User Instruction

Expected Result

- 4 Logout of **IESO Reports (Private) UI** by clicking **Logout** in the top right corner.

After clicking the **Logout** button as shown below, the page will be redirected to the authentication page:

A screenshot of the IESO Login page. The page features the IESO logo and tagline at the top. Below the logo, there are two input fields labeled "User ID:" and "Password:". A "Log In" button is positioned to the right of the password field. Below the login fields, there is a paragraph of text: "Are you trying to access the IESO Public Reports Site? This login screen is for the Market Participant Report site. Please note that Microsoft Edge is the recommended browser for the IESO Public Reports site. Alternately, if using Chrome, type in the full address - http://reports.ieso.ca/public/". At the bottom of the page, there is a copyright notice: "© 2024 Independent Electricity System Operator, all rights reserved." and a "Legal Disclaimer" section with detailed terms and conditions.



Additional Resources

Training material on the IESO Reports Site UI is available here:

- [Quick-Take: Retrieving Reports via IESO Reports Site](#)

**Independent Electricity
System Operator**

1600-120 Adelaide Street West
Toronto, Ontario M5H 1T1

Phone: 905.403.6900

Toll-free: 1.888.448.7777

E-mail: customer.relations@ieso.ca

ieso.ca

 [@IESO_Tweets](https://twitter.com/IESO_Tweets)

 linkedin.com/company/IESO