
Connectivity Testing: Outage Coordination and Scheduling System (OCSS) CROW Application Programming Interface (API)

January 19, 2024



Table of Contents

Preface	2
TC01 - Access CROW/OCSS Using Web API	3
Additional Resources	8

Preface

This document outlines the test cases to be executed as part of the connectivity testing phase for the applications impacted by the Market Renewal Program (MRP). In this phase of testing, the primary objective is to assess and validate the connectivity components of the systems. Comprehensive functional testing phases will be scheduled for a future date and is not in scope of this test.

Please ensure any anomalies, disruptions, or irregularities discovered while performing the connectivity testing are documented in the qTest or Issue Log Template. This will contribute significantly to the overall improvement of the IESO tools.

Precondition:

1. API Credentials (username and password) to access

<https://webservices-sandbox.ieso.ca/ocss/OCSSWebServiceSOAP?wsdl>

Notes:

- 1. The API tool used to demonstrate the test cases in this document is Tosca's API Scan. Users may choose to test with this tool or any other web service tool of their choice.**

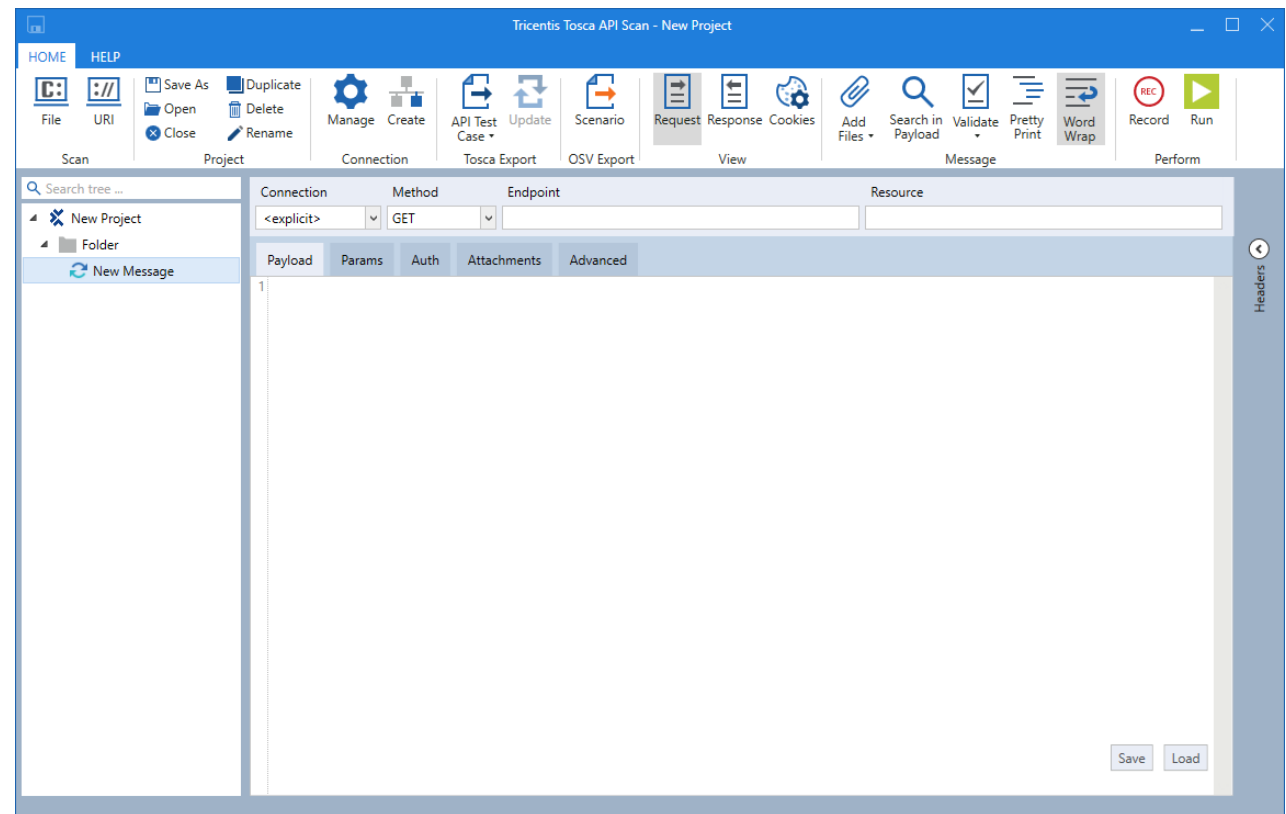
TC01 - Access CROW/OCSS Using Web API

Step User Instruction

Expected Result

- 1 Open the web service tool of your choice. In this example, instructions for testing are provided using **Tosca's API Scan** tool.

The web service application (API Scan) is opened.



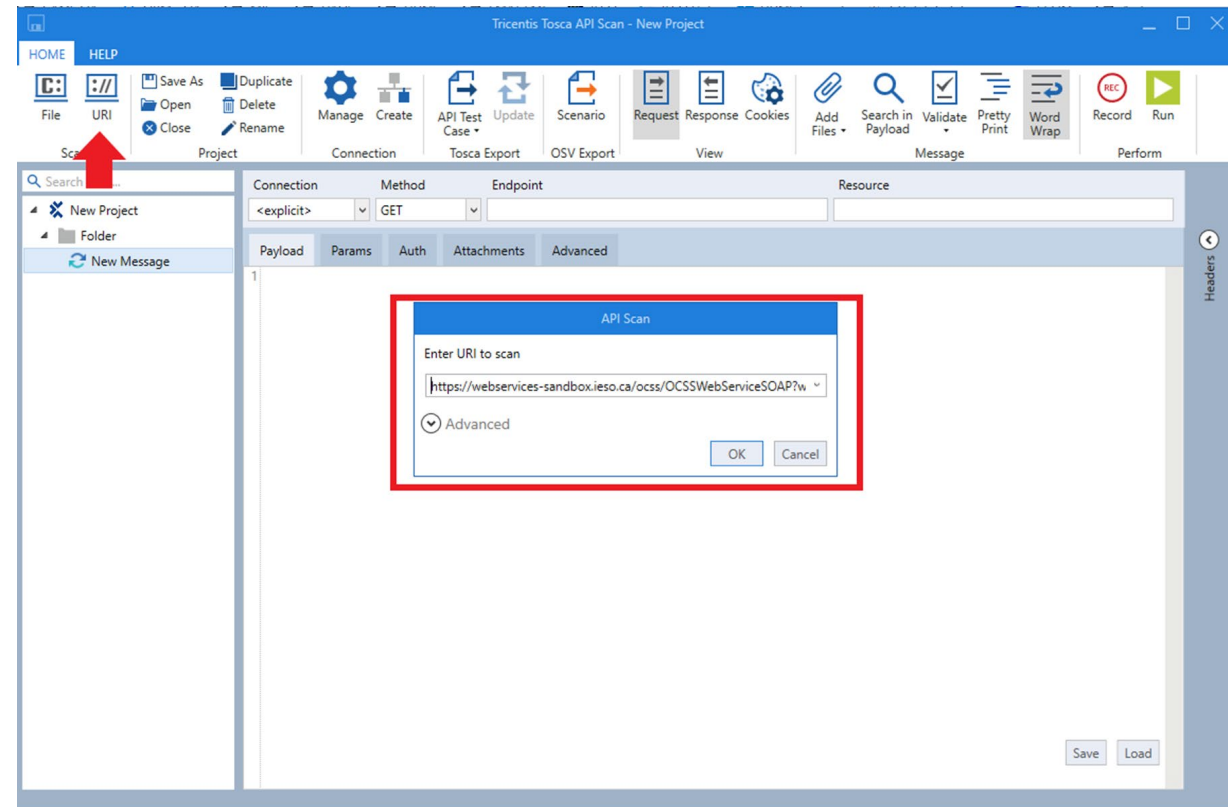
Step User Instruction

- 2 Select URI option from the Home menu at the top and enter the OCSS/CROW endpoint:

<https://webservices-sandbox.ieso.ca/ocss/OCSSWebServiceSOAP?wsdl>

Expected Result

A small window with space to input the endpoint URI should open.



Step User Instruction**Expected Result**

3 Click **OK** and confirm the project tree is populated on the left panel:

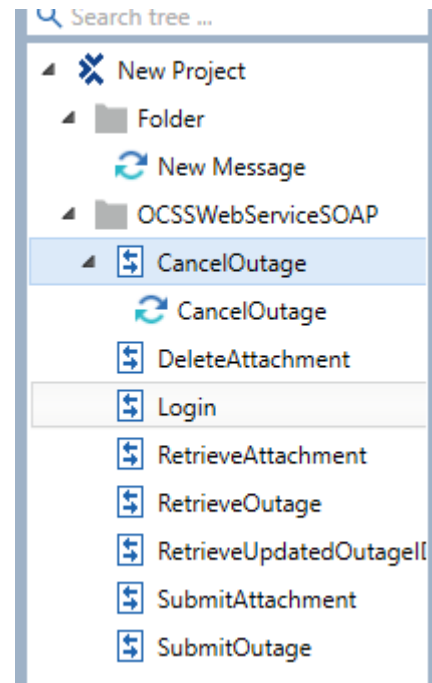
- **OCSSWebServiceSOAP**

- CancelOutage
- DeleteAttachment
- Login
- RetrieveAttachment
- RetrieveOutage
- RetrieveUpdatedOutageIDs
- SubmitAttachment
- SubmitOutage

- **Folder**

- New Message

The project tree on the left should load the following files.

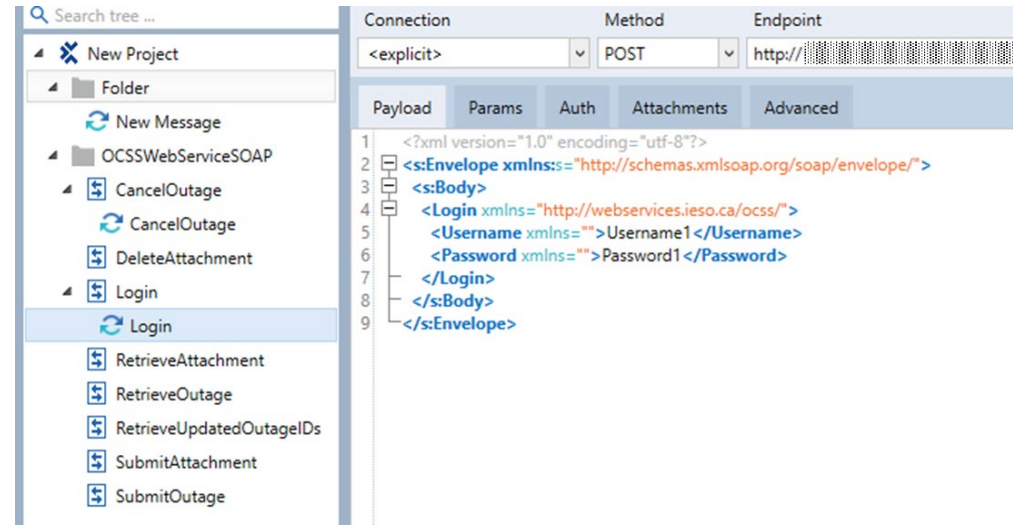


Step User Instruction

Expected Result

- 4 Expand the project tree and select **Login**.

The login request form should open.



- 5 Update the username and password in the Request form.

Form should be updated with the API username and password.

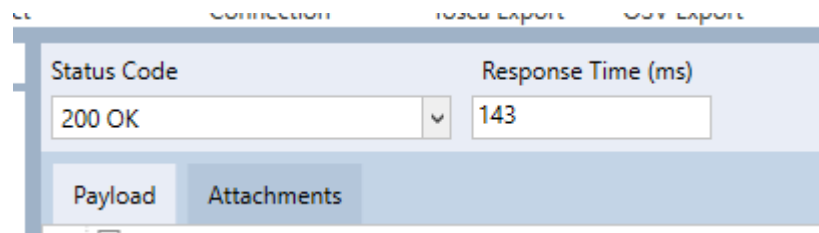


Step User Instruction

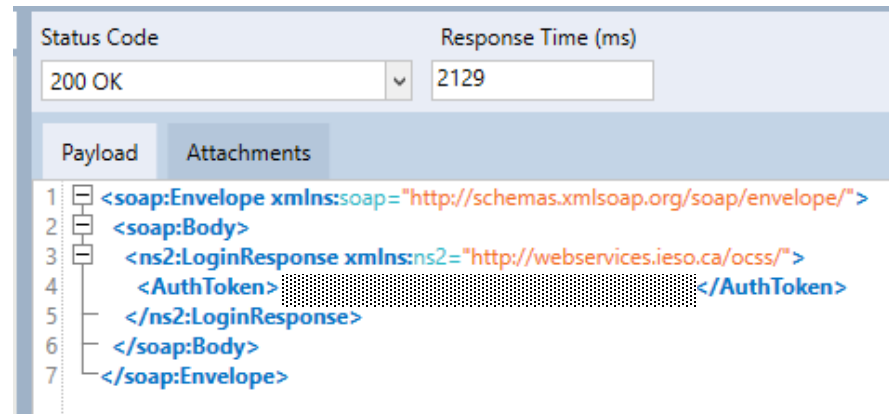
Expected Result

- 6 Select **Run** to send the request form.

A Response should be received with **Status Code 200**.



The payload should show authentication successful.





Additional Resources

- [Technical Interfaces](#) – training material on *Outage Management Tool* is available here.
 - [Outage Coordination and Scheduling System \(OCSS\) CROW Web Client User Guide](#)
 - [Outage Coordination and Scheduling System \(OCSS\) CROW Web Client User Guide - Videos](#)

**Independent Electricity
System Operator**

1600-120 Adelaide Street West
Toronto, Ontario M5H 1T1

Phone: 905.403.6900

Toll-free: 1.888.448.7777

E-mail: customer.relations@ieso.ca

ieso.ca

 [@IESO_Tweets](https://twitter.com/IESO_Tweets)

 [linkedin.com/company/IESO](https://www.linkedin.com/company/IESO)