

---

# Municipal Guide

Long Lead-Time Request for Proposals (LLT RFP)

Version 1

May 6, 2026



## Disclaimer

Disclaimer: This document and the information contained herein is provided for informational purposes only. The IESO has prepared this document based on information currently available to the IESO and reasonable assumptions associated therewith. The IESO provides no guarantee, representation, or warranty, express or implied, with respect to any statement or information contained herein and disclaims any liability in connection therewith. The IESO undertakes no obligation to revise or update any information contained in this document as a result of new information, future events or otherwise. In the event there is any conflict or inconsistency between this document and the IESO market rules, any IESO contract, any legislation or regulation, or any request for proposals or other procurement document, the terms in the market rules, or the subject contract, legislation, regulation, or procurement document, as applicable, govern.

## Document Change History

<u>Version</u>	<u>Reason for Change</u>	<u>Date</u>
1	Municipal Guide	May 6, 2026

# Contents

<b>Contents</b>	<b>3</b>
<b>Background</b>	<b>4</b>
Ontario’s Demand for Electricity Is Increasing	4
Supply Mix and Generation	4
<b>The Long Lead-Time Request for Proposals</b>	<b>5</b>
<b>Role of Municipalities</b>	<b>6</b>
Step 1: Pre-Engagement Confirmation Notice	6
Step 2: Agricultural Impact Assessments	7
Step 3: Issuing the Municipal Support Confirmation	8
Step 4: Contract Award and Beyond	9
<b>Appendices</b>	<b>11</b>
<b>Appendix A: Long Lead-Time Eligible Resources</b>	<b>12</b>
<b>Appendix B: Resources</b>	<b>13</b>
<b>Appendix C: Attracting Projects</b>	<b>15</b>
<b>Appendix D: Long-Term Procurement Results</b>	<b>16</b>
<b>Appendix G: Schedule and Milestones</b>	<b>21</b>

# Background

## Ontario's Demand for Electricity Is Increasing

As Ontario's electricity system operator and planner, the Independent Electricity System Operator (IESO) is responsible for ensuring there is enough power to meet the province's electricity needs reliably and cost-effectively today and in the future.

Every year, the IESO releases its [Annual Planning Outlook](#) (APO). Strong long-term electricity demand growth continues to be forecast across Ontario driven by economic development, population growth, and increased electrification — reaffirming the need for generational investment in electricity infrastructure.

To ensure reliable and affordable electricity is available where and when it is needed into the future, the IESO is moving forward with ambitious plans to procure a significant amount of new supply and to recommend transmission infrastructure investments, as well as expand energy efficiency programs through [Save on Energy](#).

As part of the [Resource Adequacy Framework](#), the IESO has implemented a multi-pronged strategy to ensure the necessary resources are in place to meet Ontario's rapidly growing electricity needs. A key pillar of this approach is the procurement of new electricity generating resources, through opportunities such as the Long Lead-Time Request for Proposals (LLT RFP).

## Supply Mix and Generation

Ontario's electricity demand fluctuates throughout the day, requiring a diverse mix of resources—such as hydroelectric, nuclear, natural gas, energy storage, and renewables—to maintain system reliability. Each resource contributes to meeting system needs in different ways and has distinct operating characteristics. A diverse supply mix is essential to ensuring the ongoing reliability of Ontario's electricity system, as no single resource can consistently meet all system needs.

# The Long Lead-Time Request for Proposals

The IESO has been [directed by the Ontario government](#) to launch the Long Lead-Time Request for Proposals (LLT RFP). The LLT RFP aims to procure electricity from new-build resources (including separately metered expansions) that require five or more years to develop, which therefore cannot participate in other IESO procurements, such as the Second Long-Term Request for Proposals (LT2 RFP). Resources procured are expected to be online by 2035.

Under this direction, the LLT RFP is structured as two separate procurement streams: one for energy-producing resources and one for capacity resources. The energy stream will aim to procure up to 1 terawatt hour (TWh) of annual generation, and the capacity stream will aim to procure up to 800 megawatts (MW). Successful projects will be awarded a 40-year contract.

**Renewable energy-producing resources generate electricity based on fuel (e.g., wind, water, solar energy) availability, helping provide the everyday electricity that people use at home, school, and in business.**

**Capacity resources provide electricity during times when people need it the most, such as during very hot or very cold days when everyone is using lots of power, helping to ensure the electricity grid has enough power to avoid blackouts.**

Resources that are eligible to participate in the energy stream are hydroelectric generation resources (i.e., waterpower) that are 1 MW or greater. Resources that are eligible to participate in the capacity stream are compressed air energy storage, pumped hydroelectric storage, liquid air energy storage and pumped thermal energy storage that are 10 MW or greater.

See **Appendix A** for more information about these resources.

The IESO encourages communities to email [communityengagement@ieso.ca](mailto:communityengagement@ieso.ca) with any general questions around the purpose of the procurement, the IESO's role and/or that of municipalities. Engagement activities, such as information sessions and opportunities to provide written feedback, will be provided for municipalities and Indigenous communities as identified on the [Community Engagement webpage](#).

To ensure fairness in the procurement process, once the procurement has launched and during the proposal evaluation stage, the IESO will have limited ability to communicate directly with communities.

# Role of Municipalities

Municipal governments decide whether their community is willing to support the submission of the electricity project to the IESO and manage local development approvals. Because of this, municipalities play an important role in Ontario's power system. Local decisions about hosting electricity projects will directly shape the future of Ontario's electricity supply.

As part of the IESO's Long-Lead Time Request for Proposals (LLT RFP), developers proposing projects within a municipality must obtain a **Municipal Support Confirmation**. This document confirms that the municipality supports the submission of a proposal into the procurement, and is submitted to the IESO with the developer's proposal. Without municipal support, the IESO cannot consider a project. This could make it harder to secure enough electricity resources to meet Ontario's growing demand. For this reason, it is important that municipalities understand their role in helping to build a reliable, shared energy future.

## Purpose of this Guide

This guide aims to provide an overview of the key steps to issuing a Municipal Support Confirmation and how it will be considered as part of the procurement process.

**Appendix F** provides a flow chart to compliment the information in these sections.

## Step 1: Pre-Engagement Confirmation Notice

Through past long-term electricity procurements, the IESO heard from municipalities that community engagement looks different from place to place. What works in one community may not work in another, and expectations for developer engagement with the local community can vary across the province.

Because of this, the LLT RFP does not set detailed or standard engagement requirements, except for the required Pre-Engagement Confirmation Notice. Instead, the IESO encourages each municipality to decide what level of engagement is appropriate for their community and to communicate those expectations directly to developers.

Municipalities can expect to be approached by developers to discuss potential projects, and to set expectations for community engagement. Municipalities determine what is sufficient community engagement. This is an important step because it allows the IESO to rely on a Municipal Support Confirmation (MSC) as validation that community engagement has been addressed to the satisfaction of the municipality and that the municipality supports the submission of the proposal to the IESO.

The IESO requires the developer to provide a Pre-Engagement Confirmation Notice (Notice) to the municipality **at least 60 days before** the date of the Municipal Support Confirmation. This Notice may include preliminary project details (e.g., technology type, size and proposed project site location), as well as requests for the municipality to confirm:

- the land use designation of the proposed project site,
- the schedule of council meetings to inform engagement activities and targets for seeking municipal support prior to Proposal Submission, and
- whether the municipality has a Source Water Protection Plan in place.

It also signals the beginning of the collaborative work between the municipality and the developer **to establish the community engagement plan.**

A sample Pre-Engagement Confirmation Notice is provided as Exhibit C within the Prescribed Form: Evidence of Municipal Support which can be found on the: [Long Lead-Time RFP](#) webpage.

## Step 2: Agricultural Impact Assessments

**This step is only applicable to projects proposing to locate in Prime Agricultural Areas.**

The government's directive to the IESO aligns with recent LT2 RFP requirements for locating projects on agricultural lands, including a prohibition to site any new electricity projects in Speciality Crop Areas, and that all other eligible projects proposed in Prime Agricultural Areas (as designated in the Local Municipality's Official Plan) will require the completion of an Agricultural Impact Assessment (AIA).

For all projects proposing to locate in Prime Agricultural Areas, the developer must complete the Agricultural Impact Assessment (AIA) and provide it to the Local Municipality. There are two stages for completing the AIA:

**Stage 1: The AIA Component One Requirement** considers ways to avoid potential impacts (i.e., prevent impacts, where possible, through a project siting process that considers options outside prime agricultural areas and lower priority soils, if necessary).

- Confirmation that the AIA Component One Requirement has been completed to the satisfaction of the Local Municipality is built into the Municipal Support Confirmation process via the Prescribed Form: Evidence of Municipal Support (see *Step 3: Issuing a Municipal Support Confirmation*).

**The AIA Component One Requirement must be met by the developer as of the IESO's proposal submission deadline.**

**Stage 2: The AIA Components Two and Three Requirement** considers strategies to minimize potential impacts (i.e., keep impacts to a minimum by incorporating specific measures in the design of a project or via the project's operational plan) and approaches to mitigate potential impacts (i.e., implement measures to reduce the severity of impacts such as noise, dust and traffic).

- Confirmation that the AIA Components Two and Three Requirement has been completed to the satisfaction of the Local Municipality is evidenced via the LLT Contract - Exhibit T: Form of AIA Confirmation Certificate (see Step 4: Contract Award and Beyond)

**The AIA Components Two and Three Requirement must be met by the developer within 18 months of the date the IESO contract is executed between the IESO and the developer.**

The developer is responsible for completing the AIA requirements to the satisfaction of the Local Municipality. The Ontario Ministry of Agriculture, Food, and Agribusiness (OMAFRA) produced the guideline documents for the LT2 RFP, which remain relevant for the LLT RFP. These guides can be accessed here: [OMAFRA Guidelines for the LT2 AIA Component One Requirement](#) and [OMAFRA Guidelines for the LT2 AIA Components Two and Three Requirement](#). Please note, The IESO does not review AIA materials and will rely on confirmation from the Local Municipality that the requirements have been met.

**For questions related to AIAs please contact OMAFA at [ag.info.omafa@ontario.ca](mailto:ag.info.omafa@ontario.ca)**

### Step 3: Issuing the Municipal Support Confirmation

The Municipal Support Confirmation (MSC) is a document issued by a Local Municipality to a developer. The developer includes it as part of their proposal to the IESO. The MSC confirms that the developer has completed, or committed to complete, the community engagement activities required by the municipality and that the municipality supports the submission of the proposal to the IESO.

An MSC does not guarantee that a project will receive an IESO contract, and it does not replace any required permits or approvals, such as zoning or other regulatory requirements.

Once a developer has completed, or committed to completing, the agreed-upon community engagement plan, they can request an MSC from the municipality. The MSC may be provided as

a Municipal Resolution in Support of Proposal Submission, or as a Blanket Municipal Support Resolution along with a project specific Blanket MS Confirmation Letter.

All projects submitted to the IESO under the LLT RFP that are proposed on lands within municipal boundaries must include an MSC as part of the proposal submission.

**Municipal lands that may have additional development oversight by another body, for example, the Niagara Escarpment Commission still require a Municipal Support Confirmation from the Local Municipality.**

While there is no formal support confirmation required for projects proposing to locate on **Unincorporated Territory**, there are prescribed public engagement requirements under applicable environmental assessment processes administered by government agencies such as the Ministry of Environment, Conservation and Parks (MECP). Project developers are required to follow all applicable legislation and regulations as the project progresses.

Local Municipalities are encouraged to use the template form of resolution provided within Exhibit A of the LLT RFP Prescribed Form: Evidence of Municipal Support which can be found on the: [Long Lead-Time RFP](#) webpage. Should a Local Municipality wish to develop its own resolution, it must include a number of items referenced in the guidance section of the prescribed form. Local Municipalities may choose to work with the developer to fill in the relevant details.

## Step 4: Contract Award and Beyond

The IESO evaluates project proposals based on the requirements set out in the LLT RFPs. Developers can opt to pursue a number of rated criteria points, which are awarded if all applicable requirements are met, before being evaluated on price and its ability to connect to Ontario's electricity grid. Projects that can connect to the grid are then added to the offer list for LLT Contracts until the procurement target is reached. Projects that are successful under the LLT RFP will be awarded a 40-year energy contract or capacity contract depending on the resource type.

Before and during construction, projects must obtain permits and approvals from various entities, including but not limited to:

- confirmation of appropriate zoning (including, if needed, an Official Plan and/or zoning by-law amendment or minor variance) and site plan approval (if required);
- environmental approvals (including engagement and consultation requirements with Indigenous communities);
- regulatory approvals;
- grid-connection approvals;

- permits for new roads and other infrastructure;
- satisfying the AIA Components Two and Three Requirement (if applicable); and
- as the project moves through each stage of development, municipalities ensure compliance with local requirements; developers are responsible for complying with all applicable laws and regulations.

Developing a decommissioning plan is a key component of the Ministry of Environment, Conservation and Parks' Renewable Energy Approval (REA) process under O. Reg. 359/09 of the *Environmental Protection Act*. While the REA, which would apply to hydro facilities seeking to participate in the LLT RFP, must be obtained prior to a facility injecting electricity into the grid, the decommissioning activities themselves would take place after the LLT Contract has concluded. Accordingly, while no conditions have been included in the LLT RFP regarding decommissioning, the LLT Contracts specify that:

(a) all applicable laws and regulations, including those pertaining to decommissioning, must be adhered to by a Supplier in order for the Contract to remain in good standing; and,

(b) the Supplier must agree to assume all risk and provide an indemnity in respect of all damages or costs arising out of (among other things) any legal requirements relating to decommissioning.

# Appendices

## Appendix A: Long Lead-Time Eligible Resources

The following provides an overview of eligible resources that can participate in the LLT RFP.

### Hydroelectricity

Electricity is generated by directing falling or moving water through turbines. These resources require significant time for new-build development and/or significant expansions. The footprint of the hydroelectric facility will vary depending on project scale and location. These projects are estimated to take approximately 5 to 8 years to develop.

### Long Duration Energy Storage

Long Duration Energy Storage (LDES) resources are flexible resources capable of supplying energy to the grid during periods of high demand and can help support periods of low renewable energy generation output. LDES resources can store surplus energy during periods of low demand. These resources typically have a smaller project site footprint on a per megawatt basis than wind and solar, however, project footprint can vary and the IESO encourages the municipality to work directly with the developer to understand the scale of the project. These projects are estimated to take approximately 5 to 8 years to develop.

Eligible technologies include:

- **Compressed Air Energy Storage:** a system that pressurizes air to store potential energy.
- **Pumped Hydroelectric Storage:** a system that uses the pumping and release of water between two reservoirs at different elevations to store and retrieve kinetic energy.
- **Liquid Air Energy Storage:** a system that uses electricity to liquefy air and save the released thermal energy in a high-grade thermal vessel.
- **Pumped Thermal Energy Storage:** a system that converts electricity into heat which is stored as thermal energy and later converted back into electricity via reversible thermodynamic processes.

## Appendix B: Resources

Along with our outreach activities, the IESO has resources about the electricity sector to help inform important municipal decisions:

- a procurement [community engagement webpage](#), featuring webinar recordings, as well as the feedback we have received and our written responses
- a [Long Lead-Time RFP](#) webpage, featuring procurement documents such as the RFPs, Contracts, Prescribed Forms and general LLT RFP documents
- an [Electricity Toolkit for Municipalities](#) with information about electricity planning, how electricity projects are developed, and other resources, and
- List of Government Organizations

The following government organizations (and others) play an oversight role to ensure projects are safe and appropriately sited. Some examples include:

Topic	Government Organizations
<a href="#">Environmental Assessments</a>	<p>The Ontario Ministry of the Environment, Conservation and Parks provides guidance on environmental approval requirements and enforces compliance with environmental laws. Most solar, wind or bio-energy projects in Ontario will require a <a href="#">Renewable Energy Approval</a> and smaller renewable projects may be eligible to register through the <a href="#">Environmental Activity Sector Registry (EASR)</a>. Waterpower and natural gas facilities may require a <a href="#">comprehensive or streamlined Environmental Assessment (EA)</a>, followed by subsequent permissions including <a href="#">Environmental Compliance Approvals</a> or registration on the EASR depending on the impacts of the projects. Standalone battery energy storage systems (BESS) may be eligible to register through the EASR process; however, associated components may trigger additional environmental approvals. If integrated with generation facilities, BESS components may be incorporated into existing approvals for the overall facility. All projects may need to obtain an <a href="#">authorization under the Endangered Species Act</a>. For questions about environmental approval requirements, please contact the ministry at:</p> <p><a href="mailto:REAprogramdelivery@ontario.ca">REAprogramdelivery@ontario.ca</a> (renewable energy projects and BESS)</p> <p><a href="mailto:enviropermissions@ontario.ca">enviropermissions@ontario.ca</a> (non-renewable energy projects)</p> <p><a href="mailto:SAROntario@ontario.ca">SAROntario@ontario.ca</a> (projects with protected species)</p>

Topic	Government Organizations
-------	--------------------------

<a href="#">Land Use and Municipal Requirements</a>	The Ontario Ministry of Municipal Affairs and Housing is responsible for the <i>Planning Act</i> , which provides the legislative framework for land use planning in Ontario, and the Provincial Policy Statement (PPS), which provides province-wide policy direction on land use planning. Municipalities and planning authorities are required to be consistent with the PPS in their official plans, zoning by-laws, and day-to-day decisions on land use planning matters.
---	---

<a href="#">Agricultural Land</a>	The Ontario Ministry of Agriculture, Food and Agribusiness has published a <a href="#">draft guidance document</a> for AIAs. For general inquiries, please contact: <a href="mailto:ag.info.omafa@ontario.ca">ag.info.omafa@ontario.ca</a>
-----------------------------------	--

<a href="#">Provincial Crown Land</a>	The Ontario Ministry of Natural Resources is responsible for managing Ontario's public lands, which includes authorizing the occupation of these lands to enable the development of renewable energy projects. For general inquiries, please contact: <a href="mailto:MNRRenewableEnergySupport@ontario.ca">MNRRenewableEnergySupport@ontario.ca</a>
---------------------------------------	--

Federal Crown Land ( <a href="#">Parks Canada Agency</a> )	Parks Canada Parks Canada is responsible for administering and managing federal lands and waters within national parks, national historic sites, and national marine conservation areas. This includes authorizing the occupation and use of these lands for approved projects and activities, where appropriate and in accordance with legislation and policy. For general inquiries, please contact them at: <a href="mailto:forceshydrauliques-dirwaterpower@pc.gc.ca">forceshydrauliques-dirwaterpower@pc.gc.ca</a>
---	---

Fire and Safety	Third parties such as the <a href="#">Electrical Safety Authority</a> and <a href="#">Technical Standards and Safety Authority</a> ensure that project proposals and development comply with all applicable laws and regulations.
-----------------	---

<a href="#">Niagara Escarpment Commission</a>	Regulatory body that oversees the Niagara Escarpment Plan.
---	--

## Appendix C: Attracting Projects

To proactively indicate to the sector that your municipality is a willing host for new electricity facilities, you may wish to:

- Consider engaging your Council to pass a motion that your municipality is a willing host to new electricity facilities.
- Connect with Energy Storage Canada, Association of Power Producers of Ontario (APPrO), Ontario Waterpower Association (OWA) and the Canadian Renewable Energy Association (CanREA) on ways they can share with their members your municipality's interest in hosting a facility as part of the IESO's ongoing long-term procurements.

## Appendix D: Long-Term Procurement Results

The following is a summary of the results from previous long-term procurements:

<b>Timing</b>	<b>Activity</b>	<b>Result</b>
May 2023	Expedited Long-Term RFP (E-LT1 RFP)	1,177 MW <ul style="list-style-type: none"> <li>· 882 MW energy storage</li> <li>· 295 MW non-storage</li> </ul>
May 2023	Same Technology Upgrades Solicitation (Same Tech)	286 MW
May 2024	First Long-Term RFP (LT1 RFP)	2,195 MW <ul style="list-style-type: none"> <li>· 1,784 MW energy storage</li> <li>· 411 MW non-storage</li> </ul>
April 2026	Second Long-Term RFP (LT2 RFP) Window 1 (Energy)	1,315.10 MW
June 2026	Second Long-Term RFP (LT2 RFP) Window 1 (Capacity)	To be announced. Results will be posted on the <a href="#">Long-Term 2 RFP</a> webpage

## Appendix E: Frequently Asked Questions

### Pre-Engagement Confirmation

#### **Does the IESO prescribe community engagement requirements, such as requiring a Proponent to publicly post the Pre-Engagement Confirmation Notice?**

No, the IESO does not prescribe specific community engagement activities. The IESO has heard from municipalities that they prefer to decide what kind of engagement is required by the Proponents, and therefore has left the engagement requirements, such as a requirement to publicly post the Pre-Engagement Confirmation Notice, to the discretion of the Local Municipality.

#### **What is the required timeline for providing a Pre-Engagement Confirmation Notice before a Municipal Support Confirmation can be issued?**

A project developer must give the local municipality a Pre-Engagement Confirmation Notice at least 60 days before a Municipal Support Confirmation (MSC) can be issued. As part of the Municipal Support Confirmation, the Local Municipality confirms that they received the Pre-Engagement Confirmation Notice at least 60-days prior to awarding the Municipal Support Confirmation. The developer is responsible for confirming timelines with the Local Municipality to ensure that the Local Municipality is able to issue an MSC to meet IESO submission timelines.

### Municipal Support Confirmations

#### **Is a Municipal Support Confirmation required for a project proposing to locate on lands subject to the Niagara Escarpment Plan?**

A Municipal Support Confirmation (MSC) is required for all projects proposing to locate within the boundaries of a municipality, including privately owned land, even where the land is subject to both a municipality's Official Plan and the Niagara Escarpment Plan. For clarity, this includes lands designated through the Niagara Escarpment Plan as development control areas. Please note that an MSC is not a project approval and does not supersede the necessary permits and approvals as projects move through development.

#### **Do projects proposing to site on Unincorporated Territory require an MSC?**

While there is no formal support confirmation required for projects proposing to locate on Unincorporated Territory, there are prescribed public engagement requirements under applicable environmental assessment processes administered by government agencies such as the Ministry of Environment, Conservation and Parks (MECP). Project developers are expected to follow all applicable legislation and regulations as the project progresses.

## **What is the difference between a Municipal Resolution in Support of Proposal Submission and a Blanket Municipal Support Resolution accompanied by a Blanket Municipal Support Confirmation Letter?**

A Municipal Resolution in Support of Proposal Submission (MRSPS) is intended to be a project- and procurement-specific instrument of support by the applicable Local Municipality. A Blanket Municipal Support Resolution is intended to cover multiple projects for the purposes of the LLT(e) RFP or LLT(c) RFP each individual Proposal would then need to be accompanied by the Blanket Municipal Support Resolution and a Blanket MS Confirmation Letter signed by a Chief Administration Officer or equivalent indicating support for that particular project.

Specifically, an MRSPS can only be valid for a single project, and the blanket resolution may be used to indicate a Council's support for energy projects in general (or a specific type of energy project like hydroelectric or long duration energy storage).

## **Can the municipality issue a Municipal Support Confirmation (MSC) before local approvals and public engagement has been completed?**

The purpose of the MSC is to confirm to the IESO that the municipality supports the submission of the project to the IESO for evaluation and does not supersede necessary permits and approvals (i.e., zoning, environmental) under applicable Laws and Regulations. Municipalities determine what community engagement activities are required by the project developer as part of issuing the MSC.

## **Does the Municipal Support Confirmation negate permitting or Indigenous consultation requirements?**

No, the Municipal Support Confirmation does not supersede any applicable permits or approvals under applicable laws and regulations, including, where required, the Crown's duty to consult.

## **If the municipality is the Proponent, is a Municipal Support Confirmation still required?**

Yes, all Proponents must meet all mandatory requirements set out in the LLT RFP (i.e., if the proponent is a municipality, an MSC must be included as part of the proposal).

## **Does a strong mayor motion meet the requirements for the Municipal Support Confirmation?**

No, a strong mayor motion does not meet the requirements for the Municipal Support Confirmation.

## **Agricultural Impact Assessment (AIA)**

## **Who prepares an AIA?**

The developer is responsible for preparing the documentation required for the AIA Component One Requirement, as well as the AIA Components Two and Three Requirement, and providing the documentation to the applicable Local Municipality(ies) for review.

## **Can elements of an AIA be streamlined?**

Yes, subject to the Local Municipality's discretion, elements of an AIA may be scoped to reflect the type, nature, scale and complexity of the project. For example, avoiding Prime Agricultural Areas may not be feasible for projects which are inextricably linked to agriculture. In such cases, the process for evaluating alternative locations could be streamlined for agriculturally-integrated projects, as outlined in the [OMAFRA Guidelines for the LT2 AIA Component One Requirement](#). The scope of an AIA should reflect the anticipated degree or magnitude of impact on agriculture.

## **Who reviews the AIA requirements?**

The requirements are completed by the developer and reviewed to the satisfaction of the Local Municipality. The IESO and the Ontario Ministry of Agriculture, Food, and Agri-business (OMAFRA) do not approve or endorse individual AIAs. Ministry staff may, however, provide technical support to municipalities to facilitate a consistent approach for the review of AIAs.

## **Who can I contact for more information regarding AIAs?**

For more information, or to speak to a Ministry staff person, please reach out to the Agricultural Information Contact Centre (AICC) at 1-877-424-1300 or [ag.info.omafra@ontario.ca](mailto:ag.info.omafra@ontario.ca)

The following additional resources may also be helpful:

[Prime agricultural areas](#)

[Specialty crop areas](#)

[Agricultural Impact Assessments](#)

[Story map](#) for evaluating alternative locations for non-agricultural uses

[Guidelines on Permitted Uses in Ontario's Prime Agricultural Areas](#)

[Agricultural information atlas](#) (AgMaps)

**\*\*Please note, the OMAFA Guidelines prepared for the LT2 RFP remain relevant for the LLT RFP**

## **Other**

### **Does the IESO keep a list of municipal sector resources that could be shared with other municipalities?**

No, the IESO is not in a position to compile and provide resources related to energy procurements that municipalities might be creating. However, we would encourage reaching out to the Association of Municipalities of Ontario (AMO) for further discussion.

**How are local transmission and distribution constraints considered for LLT projects?**

Before contract award and as part of the proposal evaluation, the project must pass a deliverability test conducted by the IESO. Prior to this, developers can consult with the IESO to understand connection limitations that may exist.

**Does the term Municipal Lands mean municipally owned lands or land within municipal jurisdiction?**

The term Municipal Lands is defined in the LLT RFP as land that is subject to the land use authority of an applicable Local Municipality. The term is being used as a broad term to refer to municipal land-use authority, not only land ownership.

## Appendix G: Schedule and Milestones

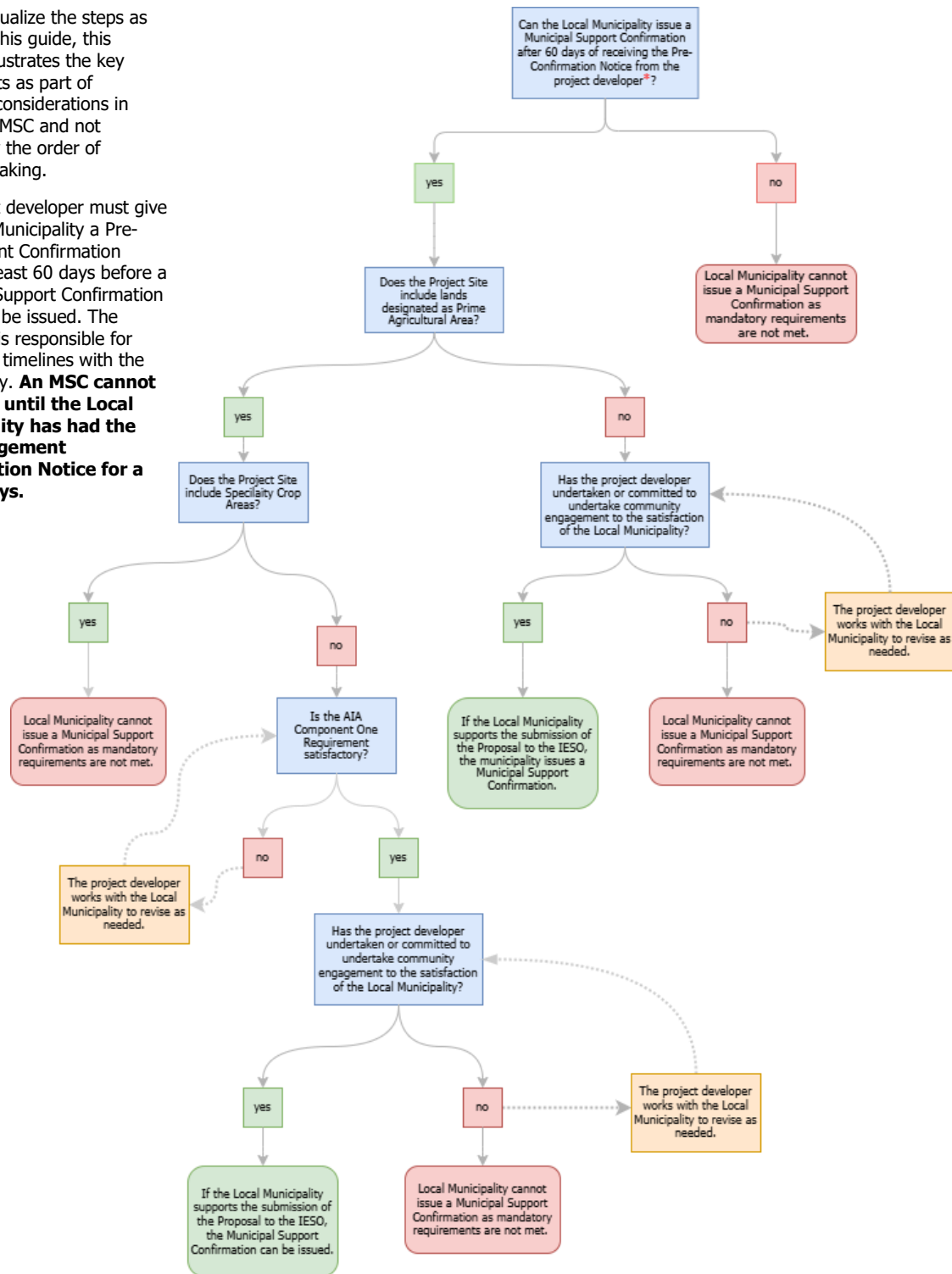
Note: Schedule and Milestones are accurate as of the date of publishing this document and subject to change. For the most current schedule, please refer to Sec. 3.1 of the LLT(c)RFP or LLT(e)RFP available on the [Long Lead-Time RFP](#) webpage.

<b>Milestone</b>	<b>Date</b>
IESO's release of the final LLT RFPs and LLT Contracts	May 6, 2026
Proponent's deadline for submitting questions and comments, if any	July 10, 2026
IESO's deadline for issuing Addenda to the LLT RFPs and Contracts, if any	August 13, 2026
Registration Start Date	September 23, 2026
Proponent's Deadline for Registration	October 06, 2026
Proposal Submission Deadline	November 26, 2026
Target date for notification to Selected Proponents	May 25, 2027

# Appendix F: Municipal Support Confirmation Pathway

To help visualize the steps as set out in this guide, this diagram illustrates the key components as part of municipal considerations in issuing an MSC and not necessarily the order of decision-making.

\* A project developer must give the Local Municipality a Pre-Engagement Confirmation Notice at least 60 days before a Municipal Support Confirmation (MSC) can be issued. The developer is responsible for confirming timelines with the municipality. **An MSC cannot be issued until the Local Municipality has had the Pre-Engagement Confirmation Notice for a full 60 days.**



---

**Independent Electricity  
System Operator**

1600-120 Adelaide Street West  
Toronto, Ontario M5H 1T1

Phone: 905.403.6900

Toll-free: 1.888.448.7777

E-mail: [communityengagement@ieso.ca](mailto:communityengagement@ieso.ca)

**ieso.ca**



[@IESO\\_Tweets](https://twitter.com/IESO_Tweets)



[linkedin.com/company/IESO](https://www.linkedin.com/company/IESO)