

Meter Data Distribution – Market Trials

Ability and Connectivity Testing

Introduction

Ability and connectivity testing provides you with the opportunity to demonstrate that your systems can inter-operate with the IESO's systems.

- Ability testing – allows you to verify system access using a Person Account to access the updated Online IESO and new IESO Reports Site in Sandbox
- Connectivity testing – allows you to verify system access using a Machine Account to access the IESO Sandbox Reports Site

Objectives

The objectives of ability/connectivity testing are to:

- Demonstrate that market trials participants can connect to and inter-operate with the IESO's sandbox environment.
- Demonstrate that market trials participant and IESO systems are configured correctly to perform the functions necessary to execute the required test cases in market trials.

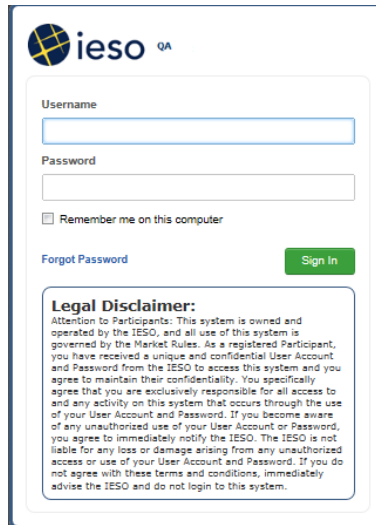
Ability/Connectivity Testing Checklist

In order to participate in market trials, you must be able to perform the functions identified in the table below:

Function	System/Application	Sandbox Access/Location
Manage Meter Data Report Profiles	Sandbox Online IESO	https://onlinesandbox.ieso.ca/
Request Meter Data Report (ad-hoc request)	Sandbox Online IESO	https://onlinesandbox.ieso.ca/
Retrieve Meter Data Reports (Person Accounts)	Sandbox IESO Reports Site via HTTPS	https://reports-sandbox2.ieso.ca/private/
Retrieve Meter Data Reports (Machine Accounts)	Sandbox IESO Reports Site via SFTP	Host Name: reports-sandbox2.ieso.ca Port Number: 22

Sandbox Online IESO – Ability Testing

Go to <https://onlinesandbox.ieso.ca/> and enter your Sandbox username and password to login.



Username

Password

Remember me on this computer

[Forgot Password](#) [Sign In](#)

Legal Disclaimer:
Attention to Participants: This system is owned and operated by the IESO, and all use of this system is governed by the Market Rules. As a registered Participant, you have received a unique and confidential User Account and Password from the IESO to access this system and you agree to maintain their confidentiality. You specifically agree that you are exclusively responsible for all access to and any activity on this system that occurs through the use of your User Account and Password. If you become aware of any unauthorized use of your User Account or Password, you agree to immediately notify the IESO. The IESO is not liable for any loss or damage arising from any unauthorized access or use of your User Account and Password. If you do not agree with these terms and conditions, immediately advise the IESO and do not login to this system.

Go to the Actions page and select “Meter Data Management”. Confirm access to the new screen related to meter data management.



Verify Manage Meter Data Report Profiles

Go to the Actions page and select “Meter Data Management” and select “Manage Meter Data Report Profile”. Confirm that the organization(s) shown in the “Select Organization” dropdown list are the organization(s) that you are representing.

Verify Request Meter Data Report

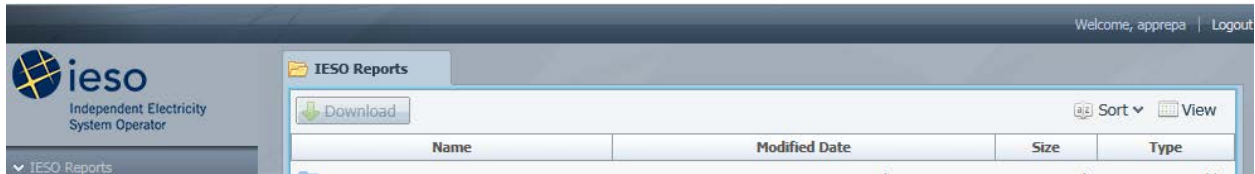
Go to the Actions page and select “Meter Data Management” and select “Request Meter Data Report”. Confirm that the organization(s) shown in “Select Organization” dropdown list are the organization(s) that you are representing.

IESO Reports Site – Ability and Connectivity Testing

Ability Testing - Person Accounts

Go to <https://reports-sandbox2.ieso.ca/private/>. Enter your Sandbox user name and password to login.

Once you are logged into the new IESO Reports Site Sandbox, confirm that you can see your username in top-right corner of the screen, i.e., *Welcome, username*.



Connectivity Testing - Machine Accounts

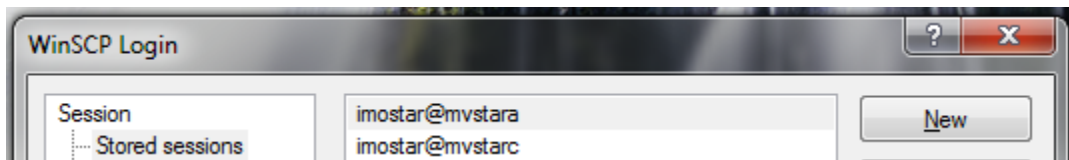
Machine accounts (API) require using a SFTP protocol to securely transfer files from/to the IESO Reports Site Sandbox to/from your computer.

To perform connectivity testing you need to:

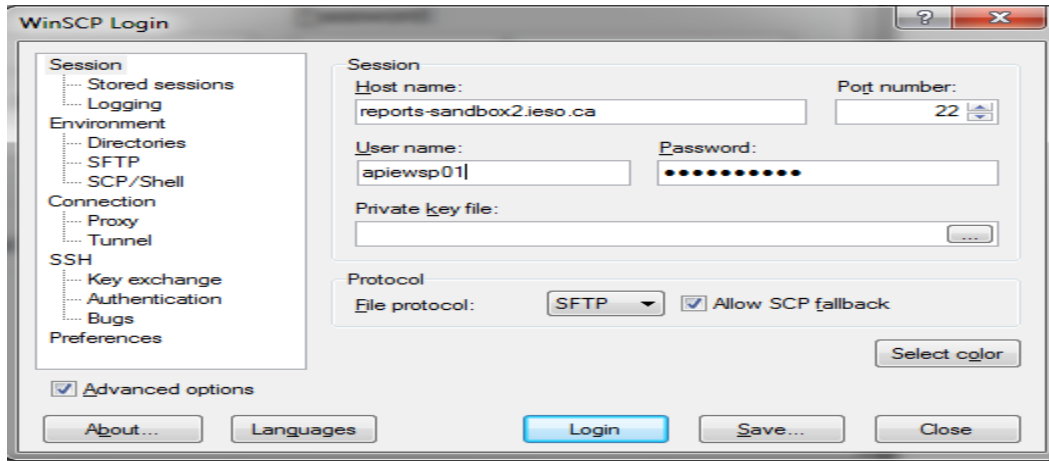
1. Download and install a software, such as WinSCP, which uses the SFTP protocol to transfer files securely to/from a computer
2. Configure your firewalls
3. Test your machine account connectivity to the new IESO Reports Site in Sandbox

Example below is using WinSCP software as a SFTP client:

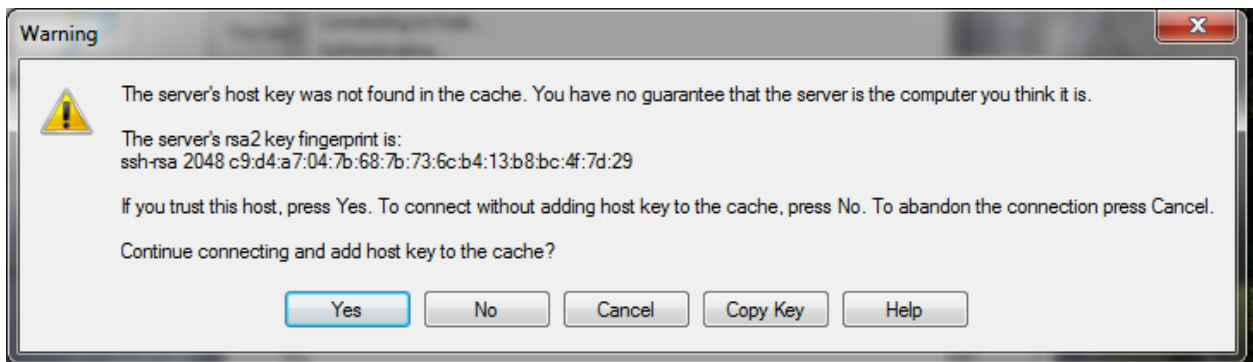
1. Start WinSCP, **Login** Dialog appears, click **New** to setup server connection



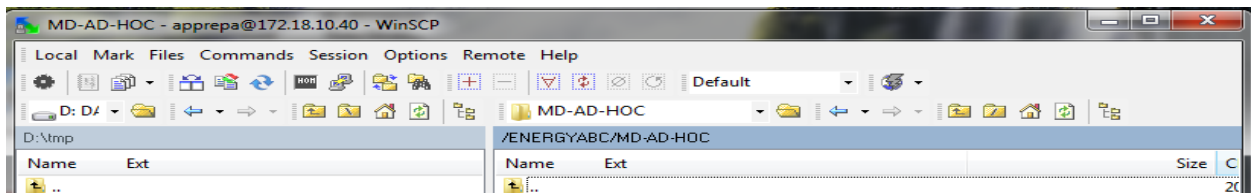
2. Enter "**reports-sandbox2.ieso.ca**" as Host Name, enter "**22**" as the Port number, select "**SFTP**" as File Protocol, enter your machine "**API Account**" as the User name and provide your password of your machine API account. Click **Save** to save your settings or **Login** to connect to SFTP sandbox server



3. A confirmation box appears, click “Yes” to add server’s host key to your computer. The server’s host key must be added to the client for a SFTP connection to be successful.



4. The list of reports available within the company and report folder appears. Confirm that your user name is displayed correctly on the WinSCP (top-left corner)



If you require assistance contact

IESO Customer Relations

Toll Free: 1.888.448.7777

Telephone: 905.403.6900

Email: customer.relations@ieso.ca