

# Station Service MR Amendment – Updates

Revenue Metering Standing Committee &  
Metering Service Providers Users Group

Fahad Rashid, Engineer, Revenue Metering,  
IESO

---

December 12, 2018

# Agenda

- Background
- Updates to Market Manual 3.7
- Implementation
- Process Maps
- Determining Station Service Estimate
- Next Steps



# Background

- Previous revision of Chapter 9 of the market rules placed the obligations related to the identification of station service and the estimation of station service on the registered market participant (“RMP”)
- Effective September 12<sup>th</sup> 2018, the obligation related to identification of station service and the estimation of station service resides with the market participant responsible for registering the facility.

# Updates to Market Manual 3.7

- Sections 2.3.1 and 2.3.2 of Part 3.7 (Totalization) of Market Manual 3 were updated to reflect the Market Rule Amendment to Chapter 9.
- Form 78 – Connection facility Station Service – not Metered by a Registered Wholesale Meter (“RWM”), formerly known as Form – 1311, has been re-introduced with modification to reference the MP instead of MSP



# Implementation

- Online IESO process will be revised so that the Market Participant who registers the facility can submit connection station service estimate
- In the interim, Market Participants shall submit the station service factor using Form 78 as per section 2.3.1 of Part 3.7 of Market Manual 3.

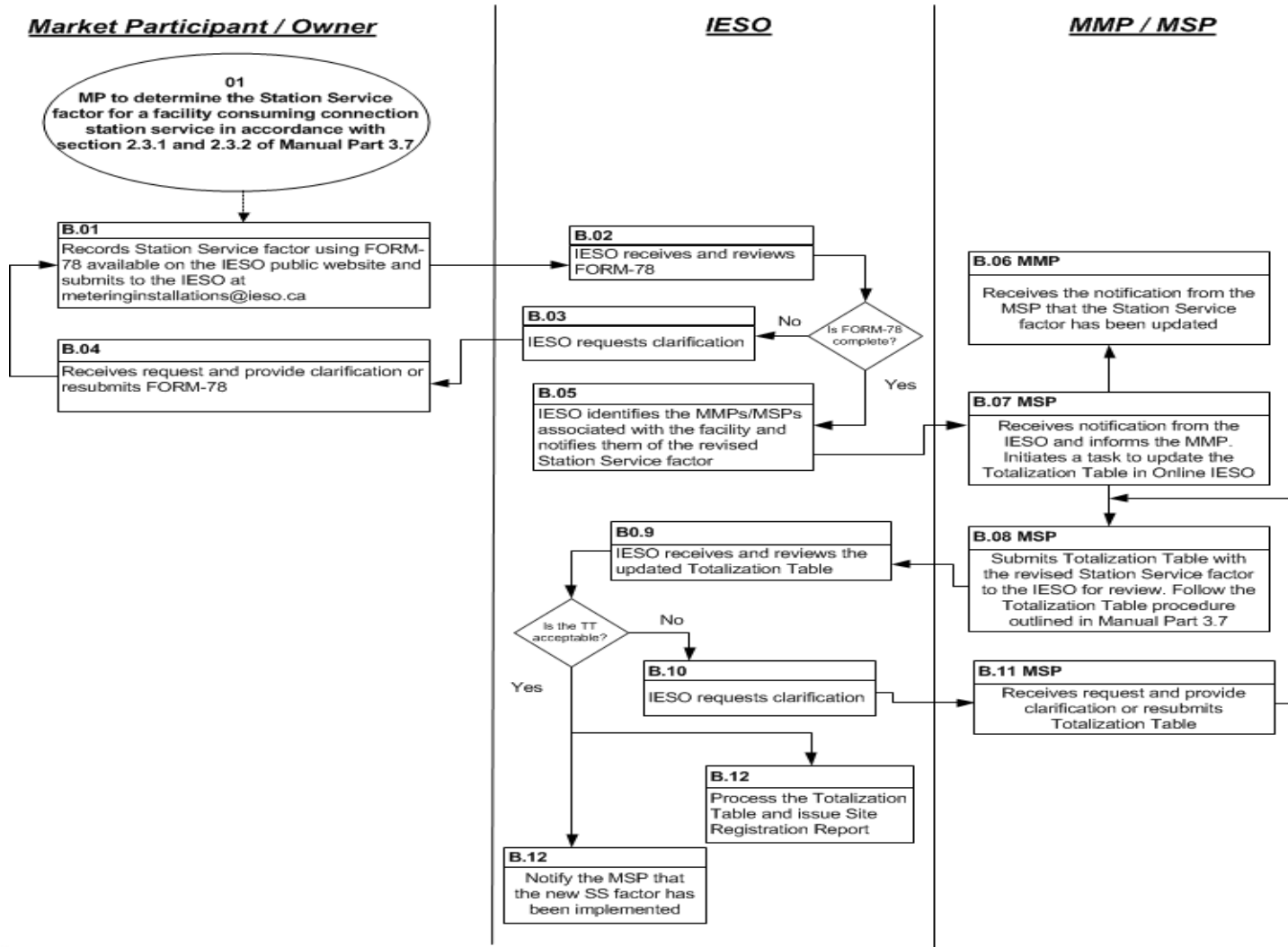


# Process Map

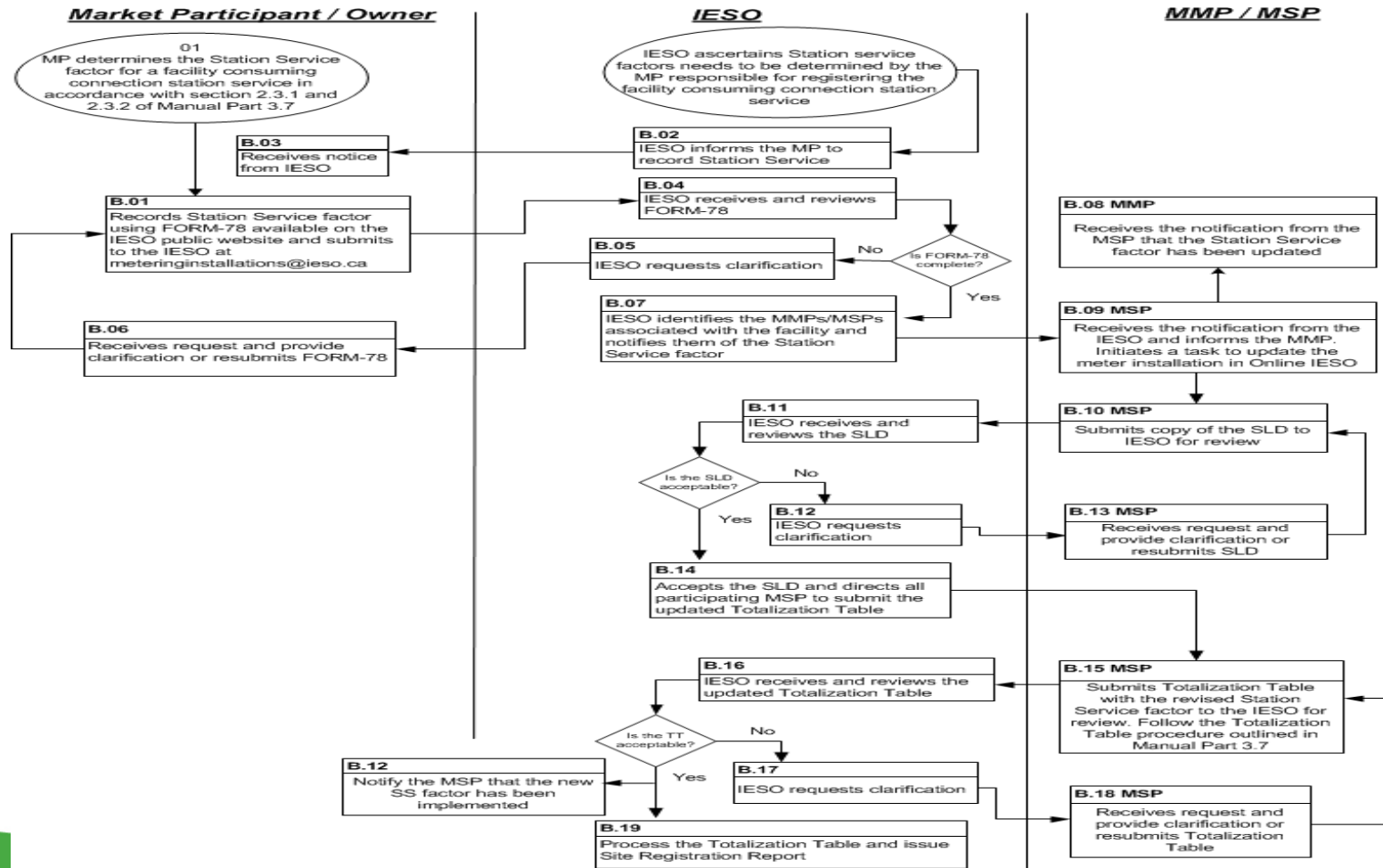
- IESO has created process maps for the following cases:
  1. When a station service estimate for an unmetered station service has previously been submitted and needs to be updated
  2. When a station service estimate for an unmetered station service is to be submitted for the first time
    - a. IESO determines that there is unmetered station service
    - b. Market Participant informs the IESO of an unmetered station service



# Case 1: Update to Station Service Estimate



# Case 2: Station Service Estimate for Unmetered Station Service





# Determining Station Service Estimates

- Section 2.3.1 of part 3.7 (Totalization) of Market Manual 3 explains how a station service factor will be estimated for a non metered station service.
- Section 2.3.2 of part 3.7 (Totalization) of Market Manual 3 explains how a station service factor will be estimated using retail meters.
- Market Participant shall perform annual checks to confirm that the estimate is valid



# Questions

